

Attachment 2

Brown County, Ohio

Opportunity Zone Prospectus

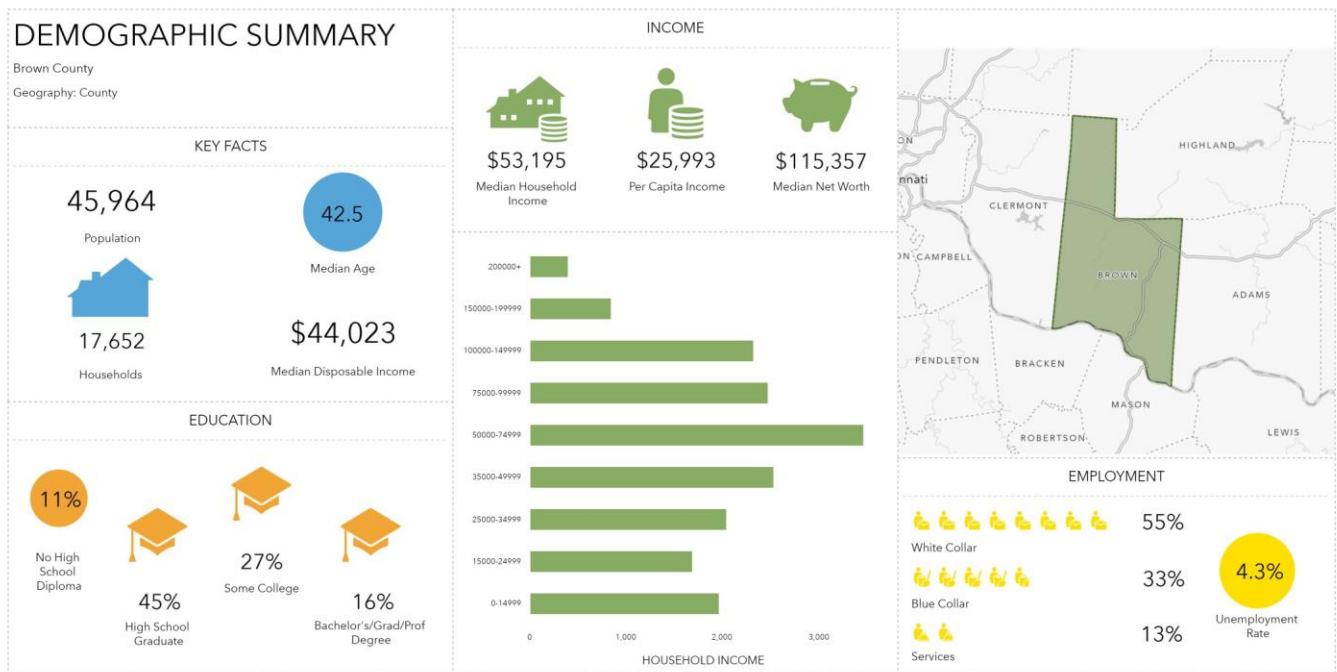
Mt. Orab Megasite
Mt. Orab Tract 250 East
Tract 416



Why should you choose Brown County?

Workforce

- Population of Working Age: 20,663
- Workers Commuting into the county: 3,900
- Top three employment industries:
 - Health Care and Social Assistance: 22.6%
 - Educational Services: 17.3%
 - Retail Trade: 10.8%



This infographic contains data provided by Esri. The vintage of the data is 2021, 2026.

Education

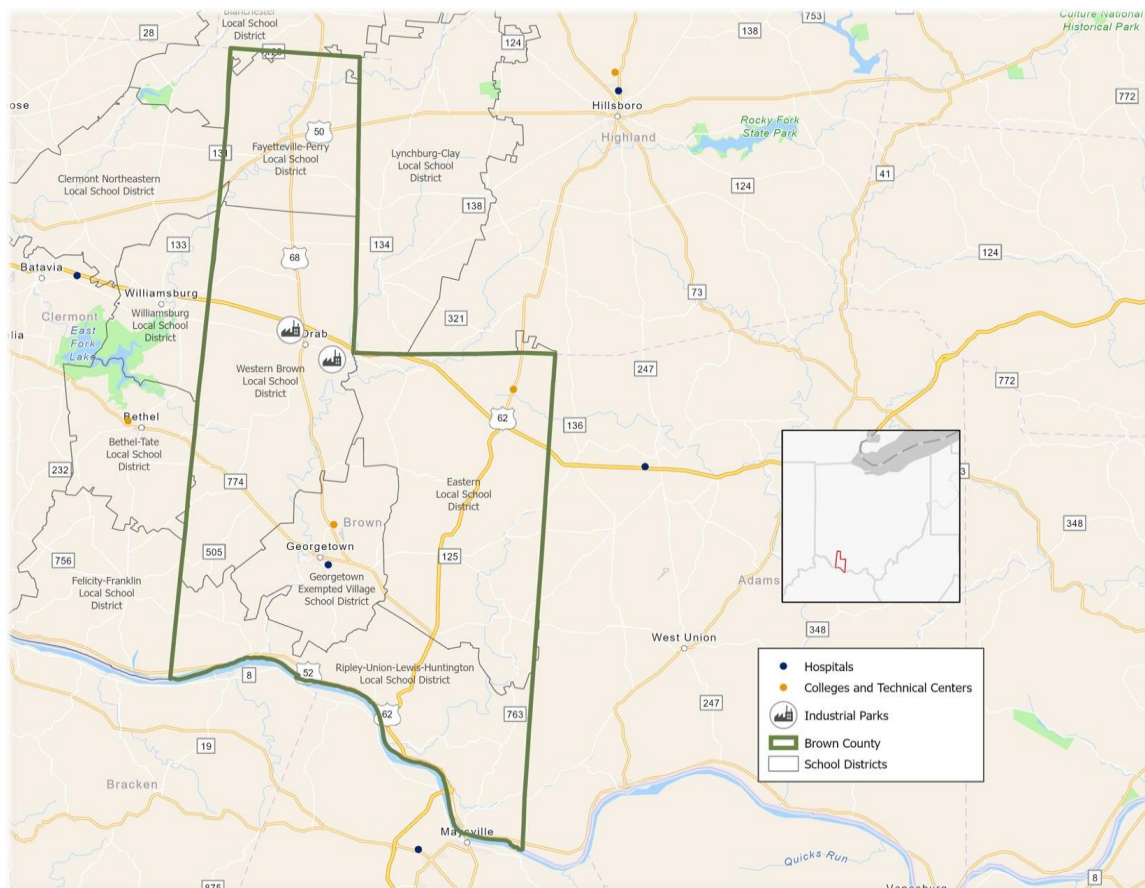
Brown County offers residents five school districts that offer great opportunities for education. Those schools include:

- Georgetown Exempted Village
- Western Brown Local
- Fayetteville-Perry Local
- Eastern Local

Why should you choose Brown County?

- Ripley-Union-Lewis-Huntington Local

Brown County is also home to Southern Hills Career and Technical Center which offers programs in Automotive Technology, Construction Technologies, Agriculture/Industrial Mechanics, and more.



Entertainment and Recreation

Brown County is home to many historical sites to explore, covered bridges to find, outdoor activities, great dining and more.

- John Rankin House: this house was one of the most known and visited homes along the Underground Railroad system
- John Parker House: John Parker was also known as a very successful conductor on the Underground Railroad
- Ripley's Historic Museums: these museums include The Ohio Tobacco Museum and the Ripley Museum

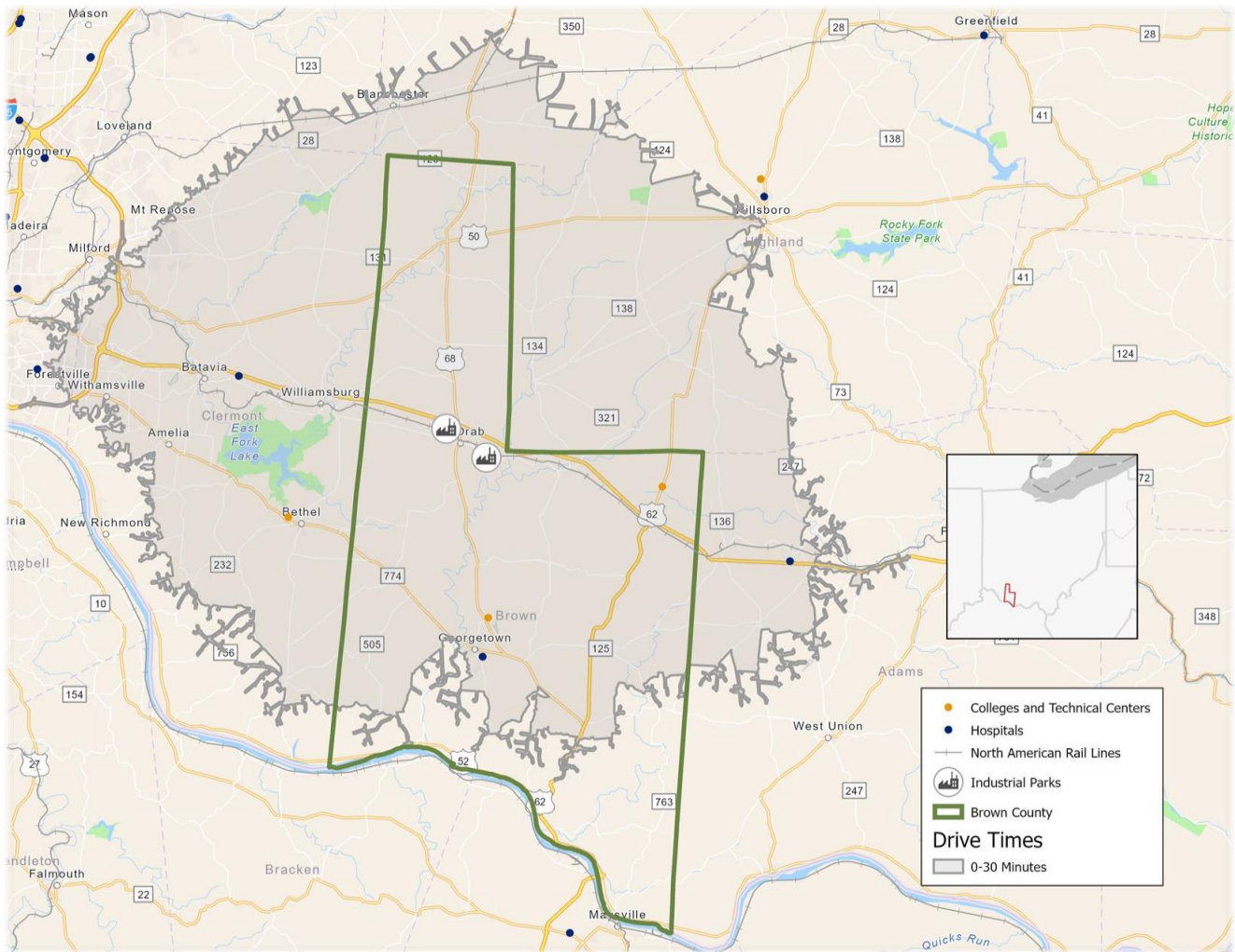
Why should you choose Brown County?

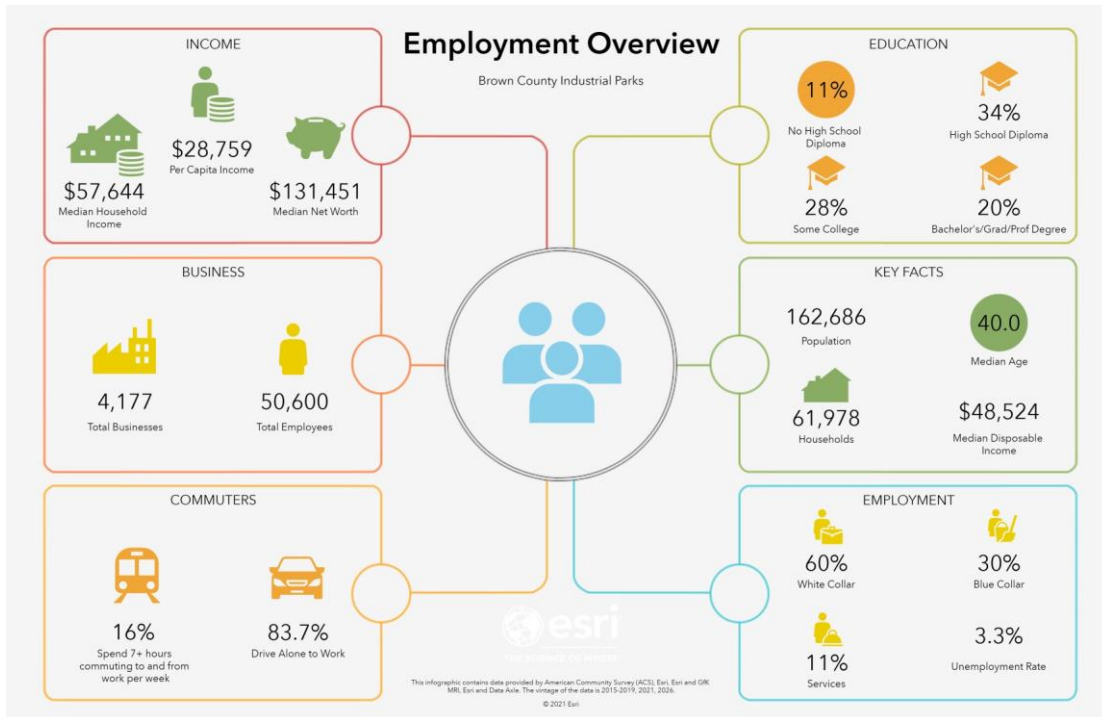
- President Ulysses S. Grant: Brown County is home to President Grant's boyhood home and his schoolhouse
- Brown County Painted Murals
- Multiple wineries and breweries



President Grant's Childhood Home

Employment Overview: 30 Minute Drive Time





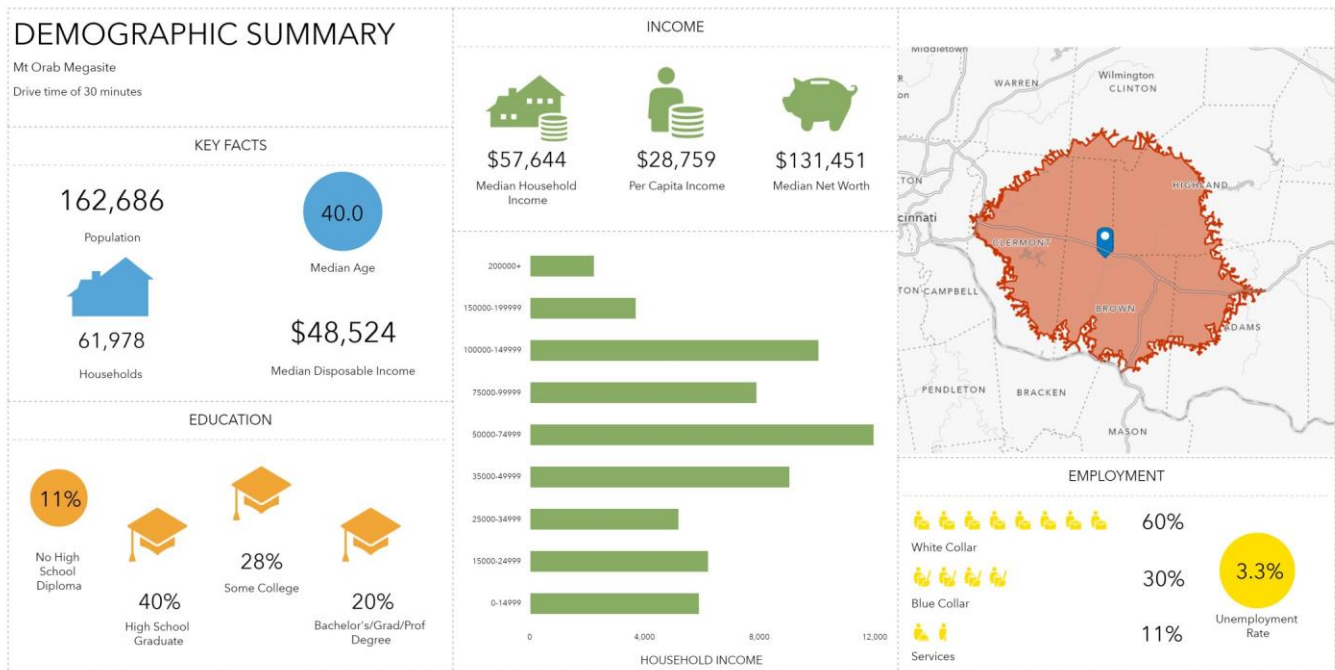
Mt. Orab Megasite

Brown County is home to the Mt. Orab Megasite Industrial Park

The 1,043 acre site is divisible

Located in an Opportunity Zone, Enterprise Zone, Foreign Trade Zone, and TIF District

- Located less than a mile from State Route 68 and State Route 32
- Located 22 miles from Interstate-275 and 36 miles from I-71
- Just 48 miles from the Cincinnati/Northern Kentucky International Airport
- Less than an hour away, Cincinnati also provides the site with a river port
- Multiple studies have already been completed to make the park ready for your business

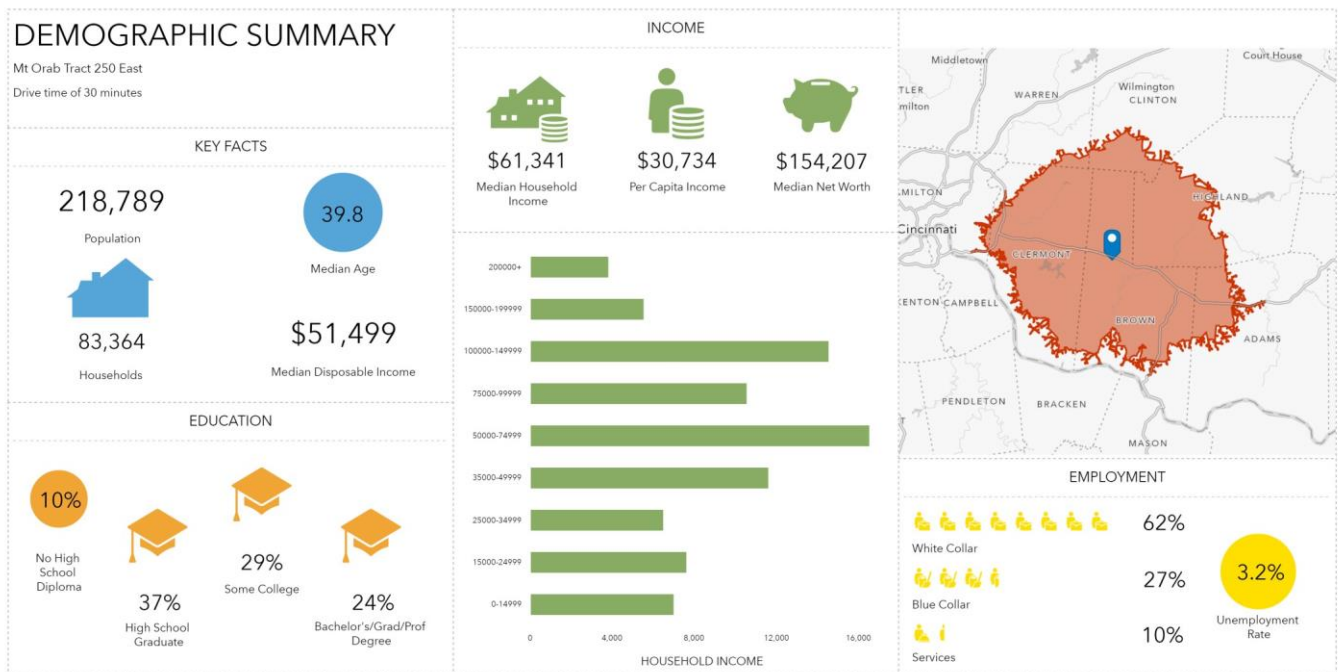


This infographic contains data provided by Esri. The vintage of the data is 2021, 2026.

© 2021 Esri

Mt. Orab Tract 250 East

- 78 acres available at this site with little to no obstructions on the property
- All utilities available at the edge of the site
- Located within an Opportunity Zone, Enterprise Zone, and a TIF District
- Located within an hour of all transportation needs
- Phase I ESA, Geotechnical Study, and Agriculture Study completed with Wetland and Endangered Species study in progress



This infographic contains data provided by Esri. The vintage of the data is 2021, 2026.

© 2021 Esri



Brown County, Ohio

Tract 416

- This site has 111 acres available for development
- Opportunity Zone, Enterprise Zone, TIF District and Foreign Trade Zone
- This site is expanding with neighboring properties coming available
- All utilities available



If you are interested in any of the properties Brown County has to offer, please contact the Brown County Department of Economic Development



Brown County Department of Economic Development

800 Mt. Orab Pike, Suite 131

Georgetown, OH 45121

P: (937) 378-3536