

Winchester Industrial Park

Southern Ohio's Premiere Industrial Park Setting Along the Appalachian Highway



Adams County Commissioners and the County CIC have collaborated on the acquisition of over 55 acres as part of the County's comprehensive economic development plan focused on creating a more diverse local economy. The \$12 million infrastructure deployment (new access road and water/sewer extensions) will be completed in 2022. Developers are encouraged to contact the County Economic Development Office to discuss pricing and job creation proposals:

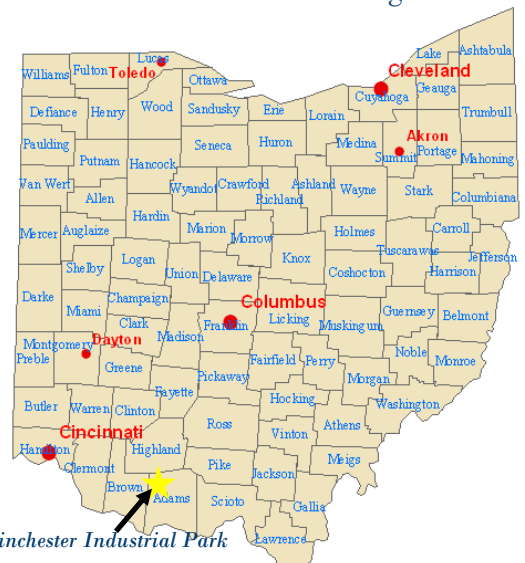
Adams County Economic Development: Holly Johnson, Director; 937-544-5151; holly.johnson@adamscountyoh.gov

JobsOhio Support

Recognized for its location within Adams County's large Opportunity Zone north of US 32 (the federally-designated Appalachian Hwy.), the Winchester Industrial Park received a **\$4.2M** infrastructure grant from JobsOhio, the State's leading economic development organization (www.jobsohio.com). The Park is poised to be a critical asset for corporate expansions, as the Ohio River Corridor is fast becoming a focus of the modern Midwest site selection process.



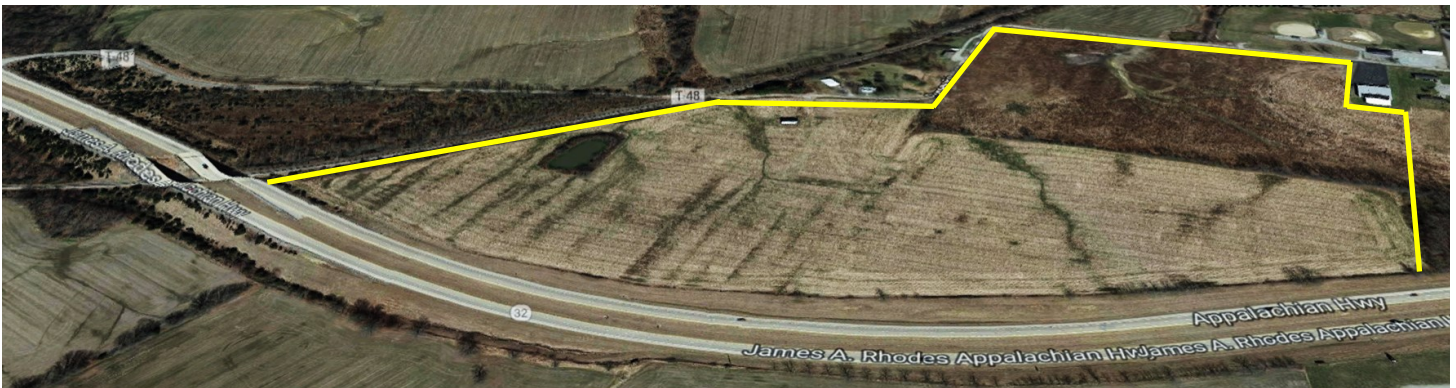
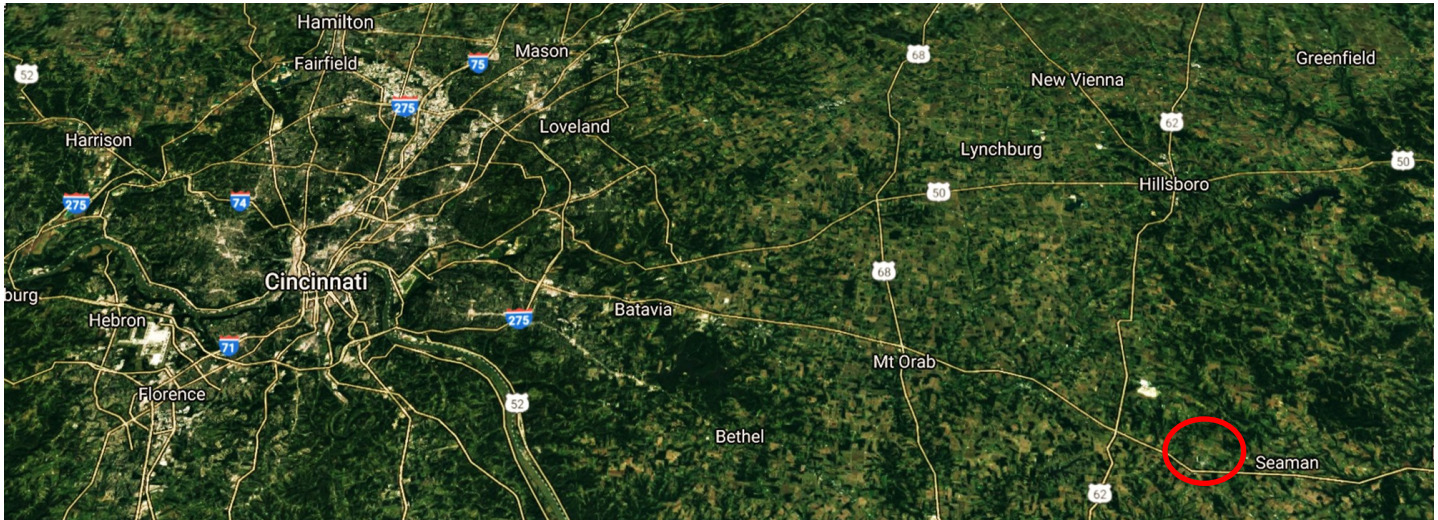
August 2021 Groundbreaking with JobsOhio officials



Winchester Industrial Park

A Strategic Location within an Unparalleled Economic Development Framework

Located just 35 mi. east of the Cincinnati metro area, the Park's US 32 location offers the ideal balance of a rural setting with easy access to consumer markets and a sizable workforce.



Economic Development Leadership

County leaders have a long track record of successful public-private partnerships to create an environment that welcomes corporate investments to a rural setting (2019 county pop. estimate—27,698). Since the 2018 closure of two coal-fired power plants within the county, the development team has focused on asset creation to attract new investments (and expansions) from a variety of industries. Some economic development success stories include:

Adams County Regional Water District—Development leaders' foresight created the district in 1969, making innovative industrial developments possible.

GE's Testing Facility (Peebles, OH)—\$200M has been invested in the facility since 2006, with the \$90M '07 expansion facilitated by the Development Office's procurement of \$845,000 in road expansion grants.

Workforce Center — As part of a comprehensive redevelopment strategy, the County purchased a 15,000 sf bldg. in 2018 and is creating the county's first post-secondary center focused on welding, machining and healthcare.

The local development team processes millions of dollars of grants each year and has recently entered into real estate ownership. Spec building and other public-private partnership proposals are welcomed and encouraged at Winchester Industrial Park!



Rendering of the new Adams County Workforce Development & Training Center, scheduled to open in late 2021.

| | | |
|-------------------------------------|-------------------------------|--|
| Bryce Custer | NAI Spring | Bryce@naispring.com |
| Jason Kester | Agracel | jkester@agracel.com |
| Anthony Adornetto | Shai—Hess | aadornetto@shai-hess.com |
| A.J. Pantoni, Dir. Indus. Brokerage | Hanna LWE | ajpantoni@hannalwe.com |
| Pat Sentner | CBRE | Patrick.sentner@cbre.com |
| Jason Hamman | Hamman Consulting | Jason@hammanconsulting.com |
| Michelle Comerford | Biggins Lacy & Shapiro | mcomerford@blsstrategies.com |
| Craig Price | Propel Development | craig@propel-development.com |
| Jim Lenner | Burton Planning | jlenner@burtonplanning.com |
| InSite Consulting | Tonya Crist | tcrist@insiteconsultinggroup.com |
| Global Location Strategies | Didi Caldwell | didicaldwell@glsconsults.com |
| Next Move Group | Chad Chancellor | chad@thenextmovegroup.com |
| Vorys Sater Seymour & Pease | Scott Ziance | sjziance@vorys.com |
| Bricker & Eckler | Caleb Bell | cbell@bricker.com |
| D. Byers & Associates | Dorinda Byers | Dorinda@dbyersassoc.com |
| Ohio Ec. Dev. Assc. | Mark Barbash / Jennifer Price | mbarbash@ohioeda.com jprice@ohioeda.com |